

CABIN AIR FILTER – INSTALLATION INSTRUCTIONS

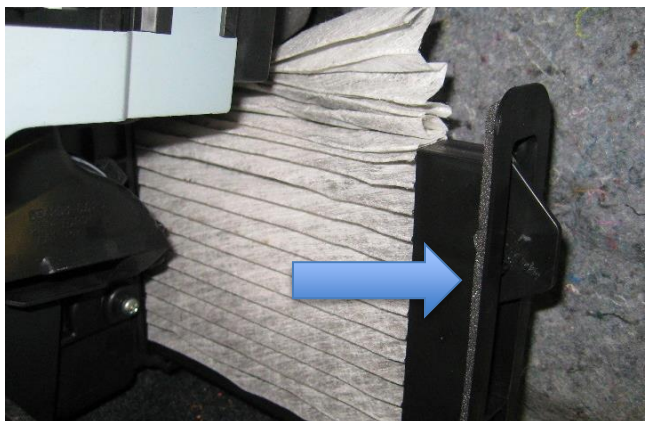
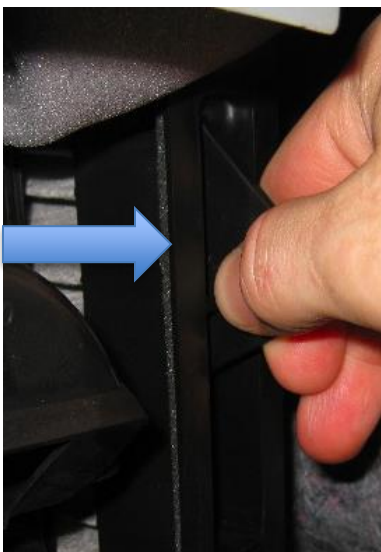
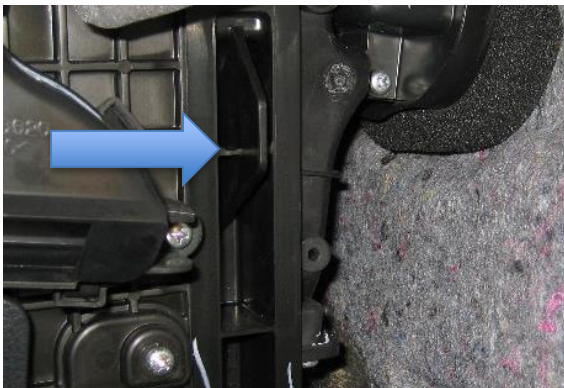
Part No.: **PC5877X**

Est. Installation Time: **less than 15 min.**

OEM No. 27891-EL00A

The cabin air filter is located behind the glove box assembly.

1. The glove box assembly should be removed
2. Open the glove box and remove 4 screws on the upper panel of the glove box
3. Remove the 4 screws securing the lower part of the glove assembly
4. Pull out the glove assembly and set it aside
5. The cabin air filter housing is located behind the HVAC assembly on the left side – Fig. 2
6. Pull the filter out (you may need to utilize Plier)– Fig 3 & 4
7. Clean the filter housing and the area around it
8. Insert the new filter with plastic tab is facing right and up
9. Install the glove assembly and secure it with the 4 screws on the upper panel and 4 on the lower edge.



This is only a guide and may not be for exact model. See Owner's manual and/or local mechanic for exact instructions for the particular model.