

# CABIN AIR FILTER – INSTALLATION INSTRUCTIONS

Part No.: **PC5643X**

Est. Installation Time: **less than 10 min.**

Mazda 6 (2003-08)

## The cabin air filter is located behind the glove box

1. Open the glove box
2. From the inside right side of the box, push the plastic latchet of the stop-wire to unclip it from the glove box →
3. Push inward both sides of the glove box to disengage the stoppers – Fig. 1
4. Allow the glove box to swing down and disengage the hinges.
5. Remove the filter housing cover by unclipping the two latchets at the bottom edge
6. Pull the old filter out from the housing and clean the housing – Fig. 3
7. Insert the new filter into the housing while the air-flow arrows pointing down.
8. Clip the cover back into place.
9. Clip the hinges of the glove box back. Close the glove box while pressing inward on the sides to engage the stoppers
10. Install the dampener on the right side and close the glove box.

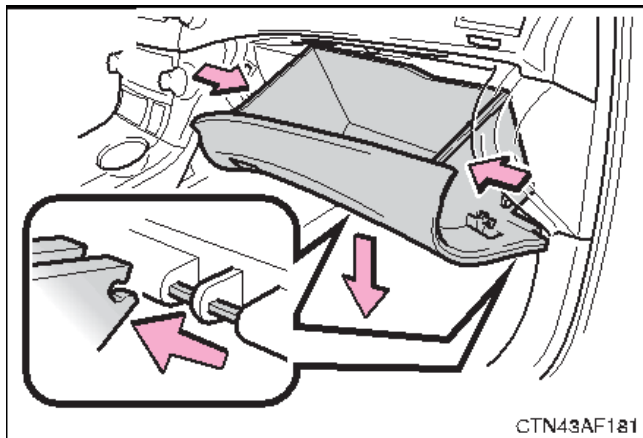
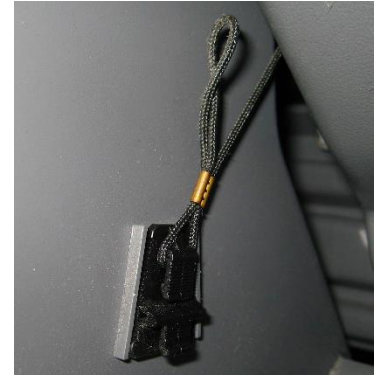


Figure 1



Figure 2



Figure 3

This is only a guide and may not be for exact model. See Owner's manual and/or local mechanic for exact instructions for the particular model.